



## SLIDEMOOR ASSEMBLY & INSTALLATION INSTRUCTIONS

READ ALL INSTRUCTIONS AND NOTES BEFORE BEGINNING

### ADDITIONAL MATERIALS NEEDED

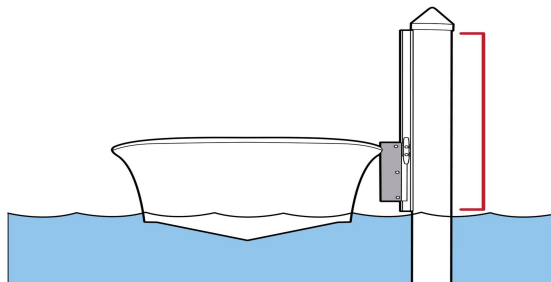
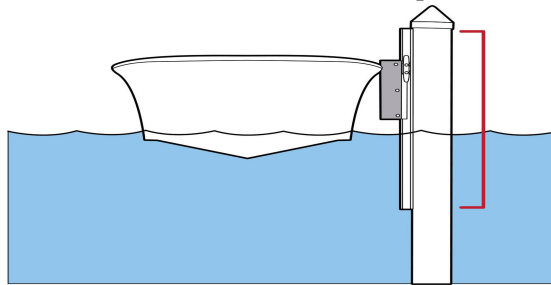
- 1 low-stretch dock line per SlideMoor unit.
- Enough bolts to properly secure track for your boat size and weight. (Drilled for 2 bolts every 2')
  - If lag bolting, ½" x 6" stainless steel bolts minimum recommended in every hole.
- Fasteners for "parking cleat" for your piling.

### PLACEMENT OF TRACK

Middle of track should be located at the height of your rub rail when in the middle of the average tide for your area.

*OR*

If LOWEST position of rub rail is known, place the BOTTOM of the track 12" lower than that position.

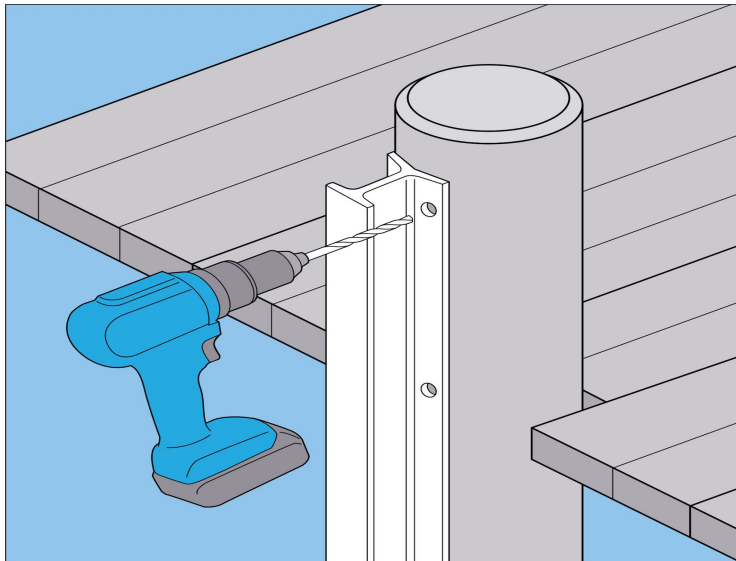
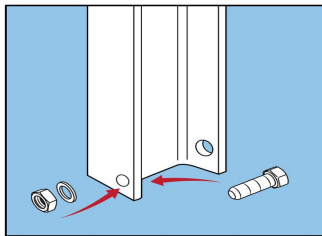


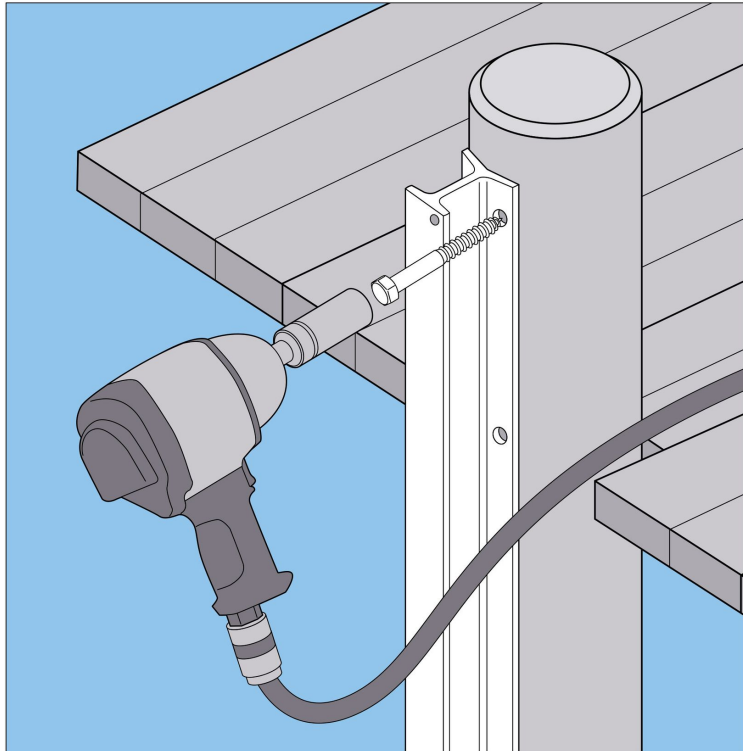
1 OF 3



## **TRACK INSTALLATION**

1. Determine pilings to be used for your SlideMoor.
2. Tie safety rope through top hole and secure to dock. (In the event track falls into the water.)
3. Install  $\frac{1}{2}$ " x 1" slide stop bolt in lower track hole and secure with lock washer and nut.
4. Position track within proper operating range (see info above). Do not remove backing tape on Track.
5. Mark top hole for drilling and remove track.
6. Drill  $\frac{1}{4}$ " top pilot hole into piling.
7. Using top hole only, bolt track just snug back in place. Ensure track is plumb, centered, and straight.
8. Mark all of holes for drilling and remove track.
9. Drill all of the  $\frac{1}{4}$ " pilot holes in piling.
10. Attach track using through bolts and nuts or proper lag bolts. Recheck and tighten after 1 week of use.
11. Mount parking cleat to piling in order to hold slide when not in use.
  - a. Mount just above top of track level, to the side of the track that will have the dock line fastened to it permanently. This will allow you to "park" the slide in a convenient location when not using SlideMoor.

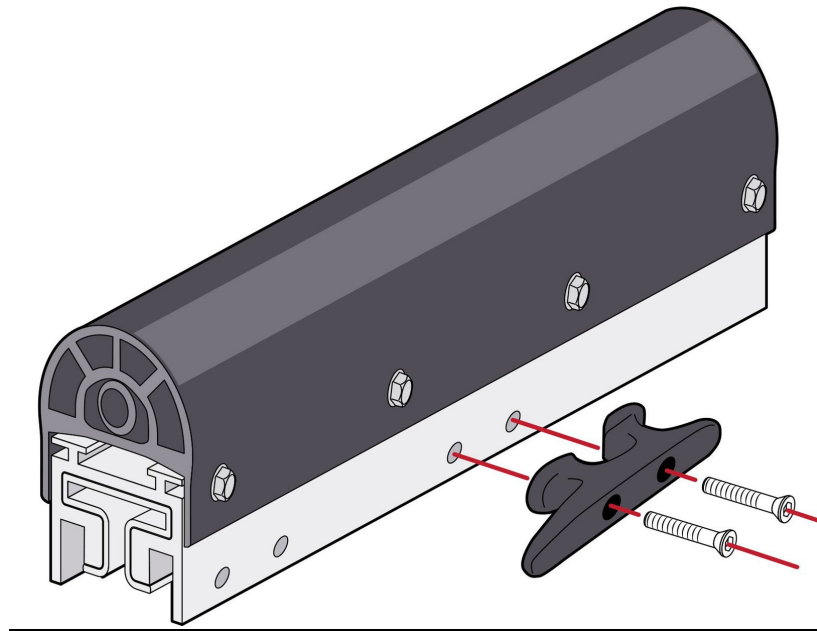




### **SLIDE ASSEMBLY**

*Slide comes assembled except for the two cleats.*

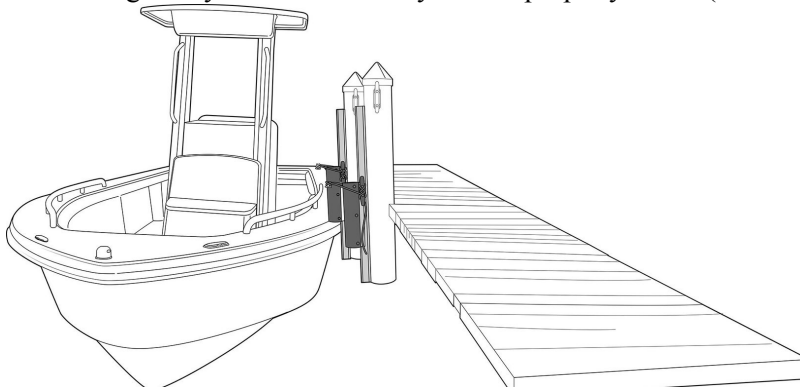
1. Insert 5/16" flat head screws in cleat and mount on both sides of slide in holes provided.
2. Determine if slide cleats need to be installed in the middle or top of slide (based upon the vertical distance of the rub rail to the gunwale).
3. Secure with lock nut and tighten.
4. Attach dock line to one of the cleats. This should be left on SlideMoor always.
5. Lift slide assembly to top of track and slide onto track.
6. Tie line to "parking cleat" to hold slide in place.
7. Install ½" x 1" slide-stop bolt in top track hole and secure with lock washer and nut.



### **TYING OFF THE SLIDEMOOR**

See enclosed Tie Up Diagram for additional information

1. Position boat with deck cleat directly in line with SlideMoor and pull rope TIGHT before tying.
  2. Return line from deck cleat to remaining cleat on other side of SlideMoor. Once again tie very tightly.
- NOTE: If your boat does not have a deck cleat directly in line with SlideMoor, you MUST place new cleat on your boat or use a SlideMoor Piling Proxy for SlideMoor System to properly work. (See "Conditions" pages).



### **MAINTENANCE**

1. Each time SlideMoor is untied from your boat, allow slide to drop to the bottom stop bolt (while holding on to rope). This will remove growth from the track. If slide does not slide all the way to the lower track stop, repeat until it cleans



track enough to hit the stop. This will allow full movement necessary to have SlideMoor work properly. If this has not been done for a while it may be necessary to clean track with scraper. Track should be cleaned frequently to prevent impairment.

2. Other maintenance includes: Washing to remove salt and dirt build-up to ensure proper movement of slide. Checking ropes for fraying. Checking all fasteners on SlideMoor for proper tightness.

### **NOTES & WARNINGS**

- This product was designed to keep the boat TIGHT against the bumper to minimize inertia. Low stretch dock line (2% maximum stretch) must be used to ensure the rub rail stays tight to the SlideMoor Rubber bumper. Low stretch dock line can be difficult to find and is available from SlideMoor.
- If your boat does not have a cleat adjacent to the SlideMoor, you will have to:
  - Mount a new cleat on the vessel, or
  - Install a new piling that aligns with an existing cleat on the vessel, or
  - Install a SlideMoor Piling Proxy for this System to work as designed.
- Boats with cleats located much higher than rub rails may need longer slides and tracks. CALL FOR INFO.
- It is the responsibility of the user to decide the proper placement of the track for the correct vertical operating range of the SlideMoor Slide. Track MUST be plumb, centered, and straight to work properly.
  - IF IMPROPER OPERATING RANGE, TRACK PLACEMENT, OR ALIGNMENT IS USED, SERIOUS DAMAGE OR SINKING OF YOUR BOAT IS POSSIBLE.
- The length of the Slide subtracted from the length of Track is the approximate vertical travel. The standard 8' track with 24" Slide allows approximately 6' of travel for the slide. If this will not be enough for your application, please order longer track length (MAX 20').
- This product supplies a TRACK, not a structural dock member. Please provide full track support to keep track from distorting or bending, as this will cause binding of the SlideMoor. Keep in mind that this is a mooring device and therefore the track must be properly secured to hold your boat to the dock. Owner must be sure dock is strong enough and track is secured properly for size and weight of vessel being used.
- Do NOT lubricate the track. If the SlideMoor Slide is not moving freely contact your installer or a SlideMoor specialist immediately and discontinue use.
  - Slide movement must not be impaired in any way. Impairment will cause binding & serious damage.
- Keep away from all moving parts.
- FAILURE TO USE THE SLIDEMOOR AS IT WAS DESIGNED WILL CAUSE SERIOUS DAMAGE OR SINKING OF YOUR BOAT!